



ARCHITECTS
THE VENTIN GROUP LTD



New Innisfil Catholic Elementary School

McMaster Avenue, Innisfil, Ontario

Simcoe Muskoka Catholic District School Board

NEW INNISFIL CATHOLIC ELEMENTARY SCHOOL

McMaster Avenue, Innisfil

Program

- *493 Students*
- *49 Space Childcare*
- *New School Site*

Design Objectives

- **Express** *Catholicity and Community*
- **Create** *Health Learning Environments*
- **Ensure** *Accessible Design*
- **Utilize** *Sustainable Best Practices*
- **Build** *Economically and Durably*



NEW INNISFIL CATHOLIC ELEMENTARY SCHOOL

McMaster Avenue, Innisfil

Site Context

*“A New Catholic School for
a vibrant new community
on the east side of the
Town of Innisfil”*

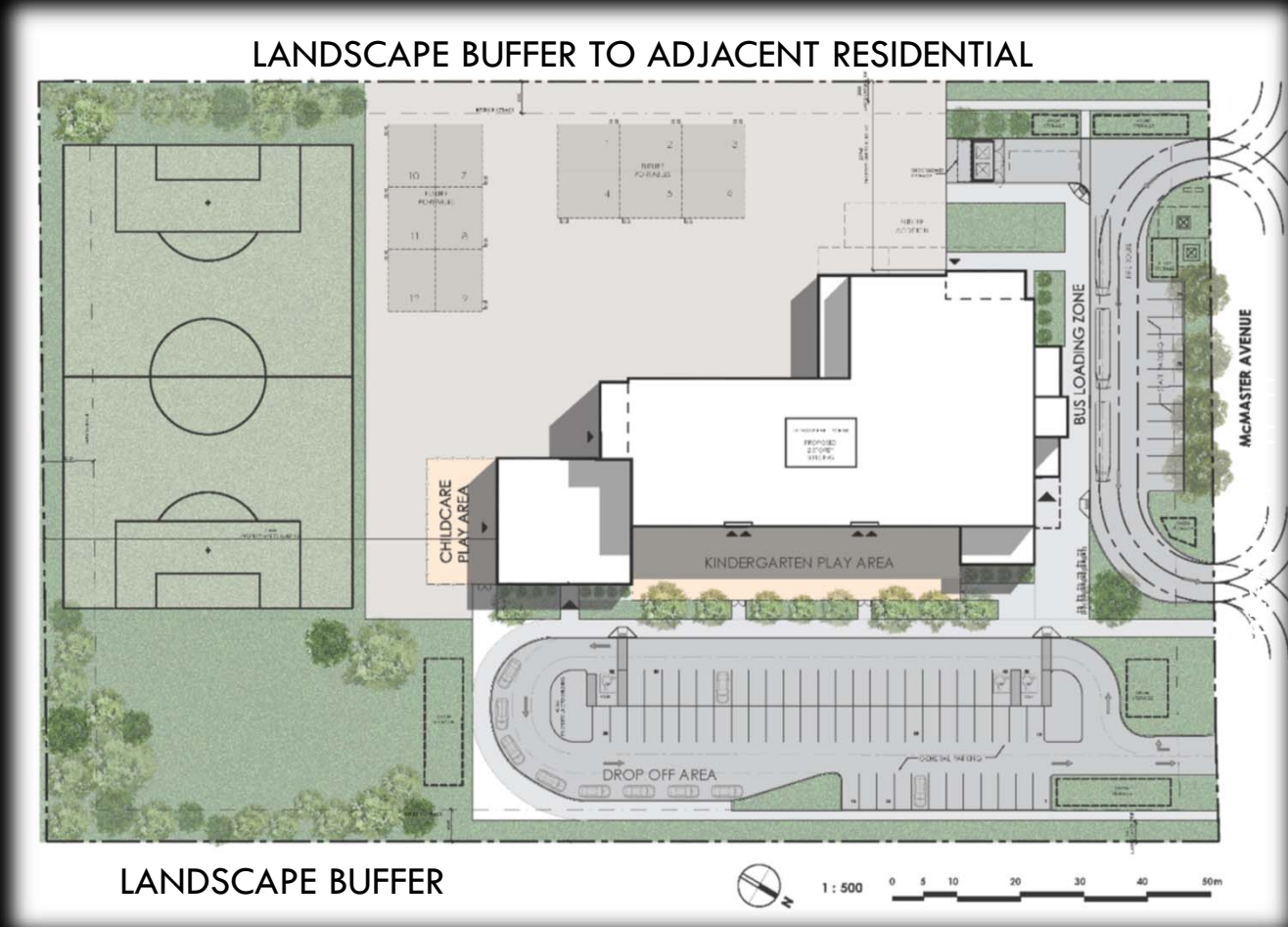


NEW INNISFIL CATHOLIC ELEMENTARY SCHOOL

McMaster Avenue, Innisfil

Site Approach

- *Building centered on the site with a north facing front facade close to McMaster Avenue*
- *Childcare and Kindergarten directly accessible from east parking lot*
- *Clear pedestrian circulation for students and parents*
- *Dedicated Parent Drop-off loop*
- *Dedicated one-way bus entry and exit*
- *Landscape buffer separating Kindergarten Playground from Parking*
- *Administration, Chapel and Library Oriented to the Street*
- *Service areas isolated from student activity areas*

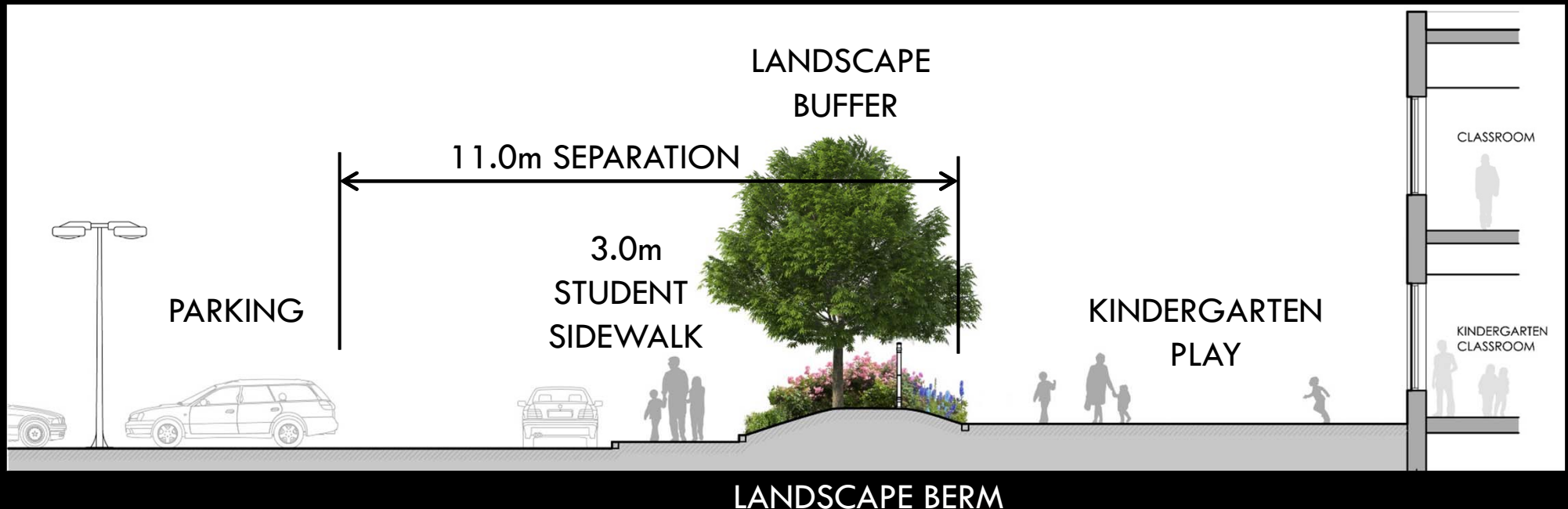


NEW INNISFIL CATHOLIC ELEMENTARY SCHOOL

McMaster Avenue, Innisfil

Kindergarten Play Areas

- *Wide sidewalks for student safety.*
- *Intensive Landscape Plantings creates visual separation from parking*
- *Physical separation of Drop-off loop from Play Yard but still easy access for parents*
- *Landscape Berm and elevated play yard create physical separation from parking*



NEW INNISFIL CATHOLIC ELEMENTARY SCHOOL

McMaster Avenue, Innisfil

Landscaping

- *Low-maintenance majority native plants.*
- *Non-toxic non-fruiting native shade trees and native conifers at playing field provide all-season protection from sun and wind.*
- *Brightly coloured, multi-season, flowering perennials and shrubs are included on the outside of the kindergarten fence as a sensory enhancement to the outdoor learning environment.*
- *Thornless and seedless trees at kindergarten play area provide safe, low-maintenance, filtered UV protection.*
- *Security (CPTED) principles were considered in the plant selection, permitting visual permeability through the site, while also allowing natural buffers to sheltered spaces.*
- *In addition to being low-maintenance, and drought-tolerant, planting near the driveways and walkways is also salt-tolerant.*



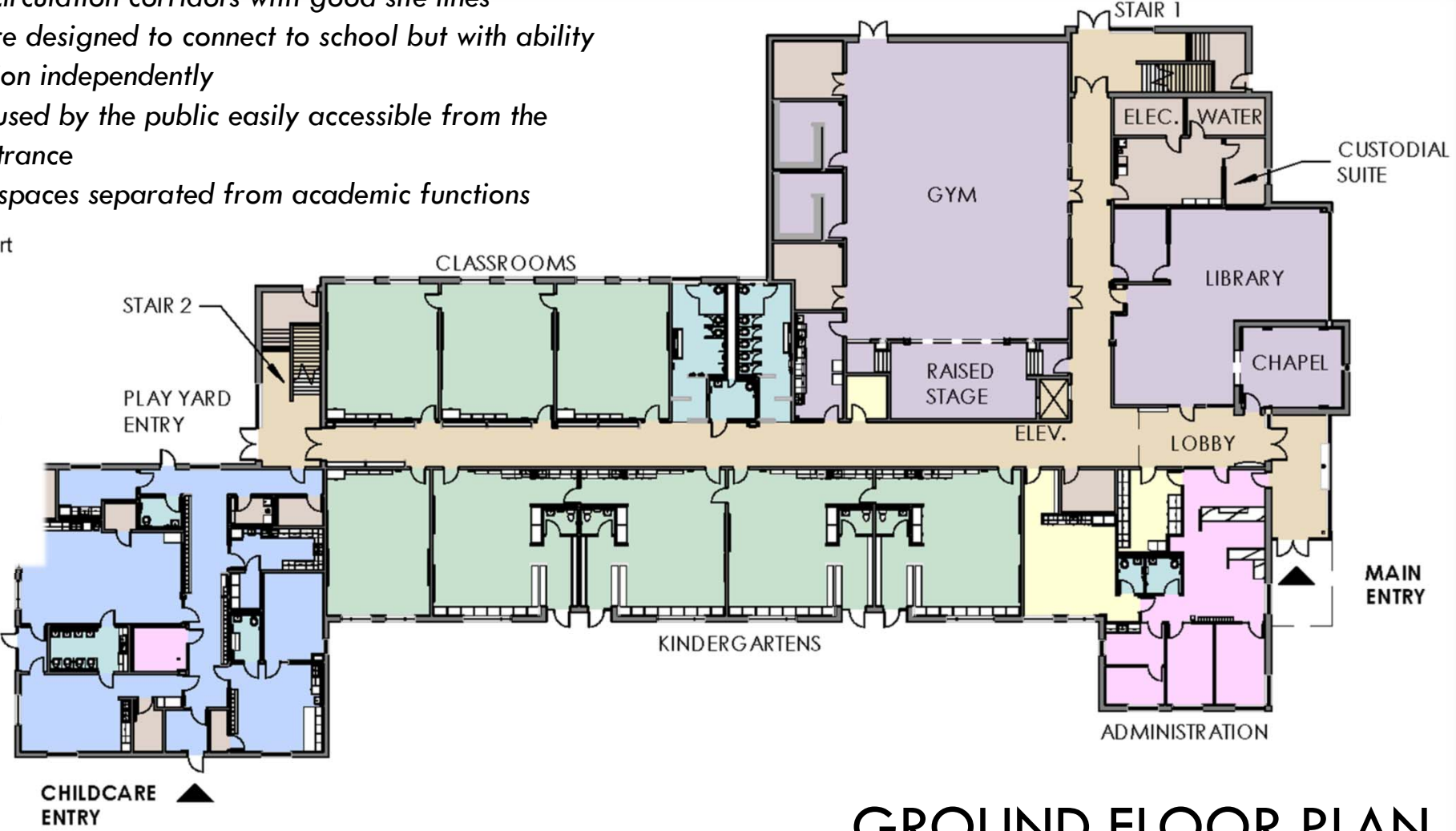
Kimberley JPS, Toronto (Snow Larc Landscape Architecture)

NEW INNISFIL CATHOLIC ELEMENTARY SCHOOL

Building Plan Organization

- Administration centrally located.
- Simple circulation corridors with good site lines
- Childcare designed to connect to school but with ability to function independently
- Spaces used by the public easily accessible from the main entrance
- Service spaces separated from academic functions

- Academic Support
- Administration
- Childcare
- Circulation
- Learning Spaces
- Public Spaces
- Service Spaces
- Washrooms

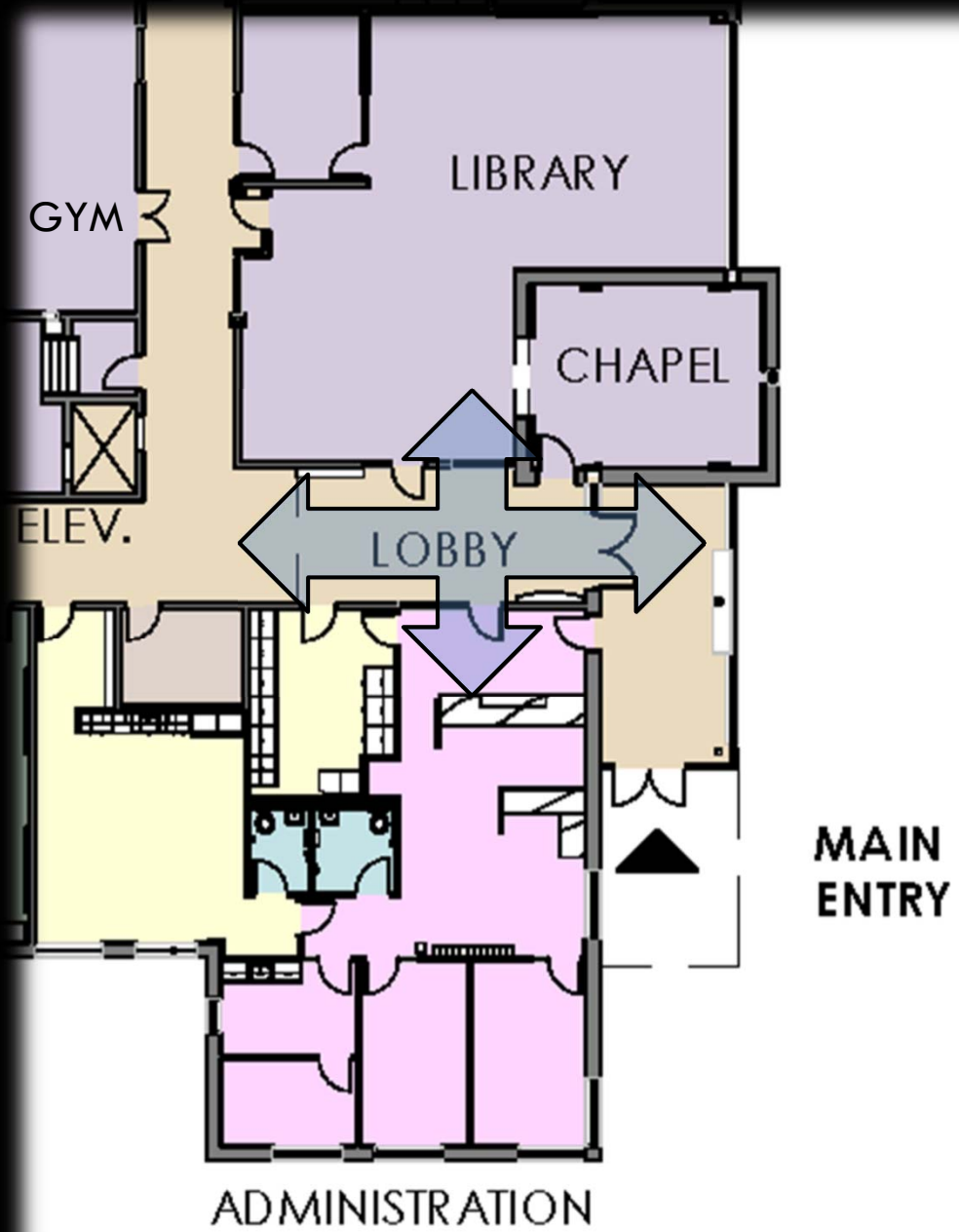
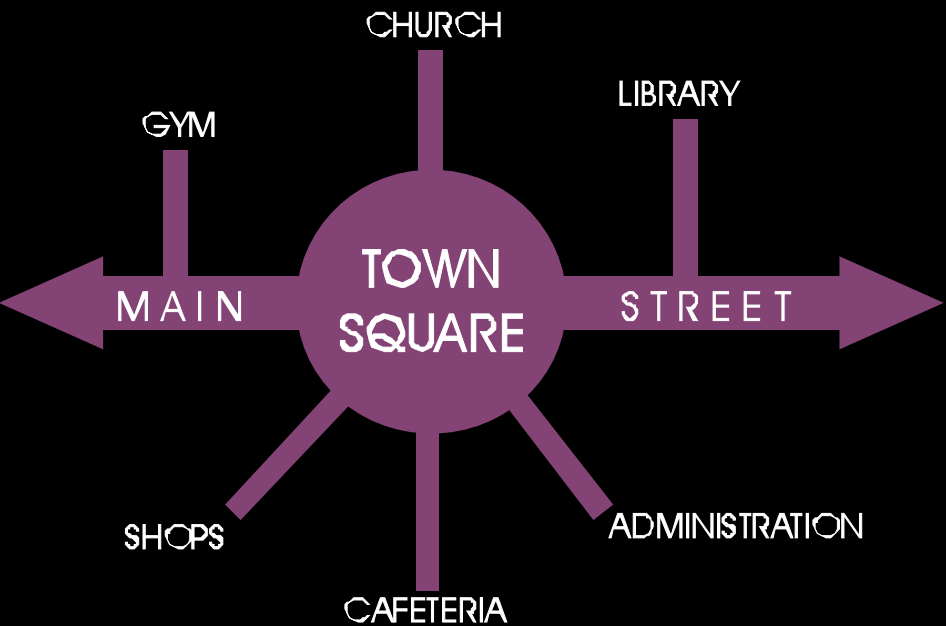


GROUND FLOOR PLAN

NEW INNISFIL CATHOLIC ELEMENTARY SCHOOL

Planning and Organization

“Using a Town Square Model to organize primary public spaces of the building”

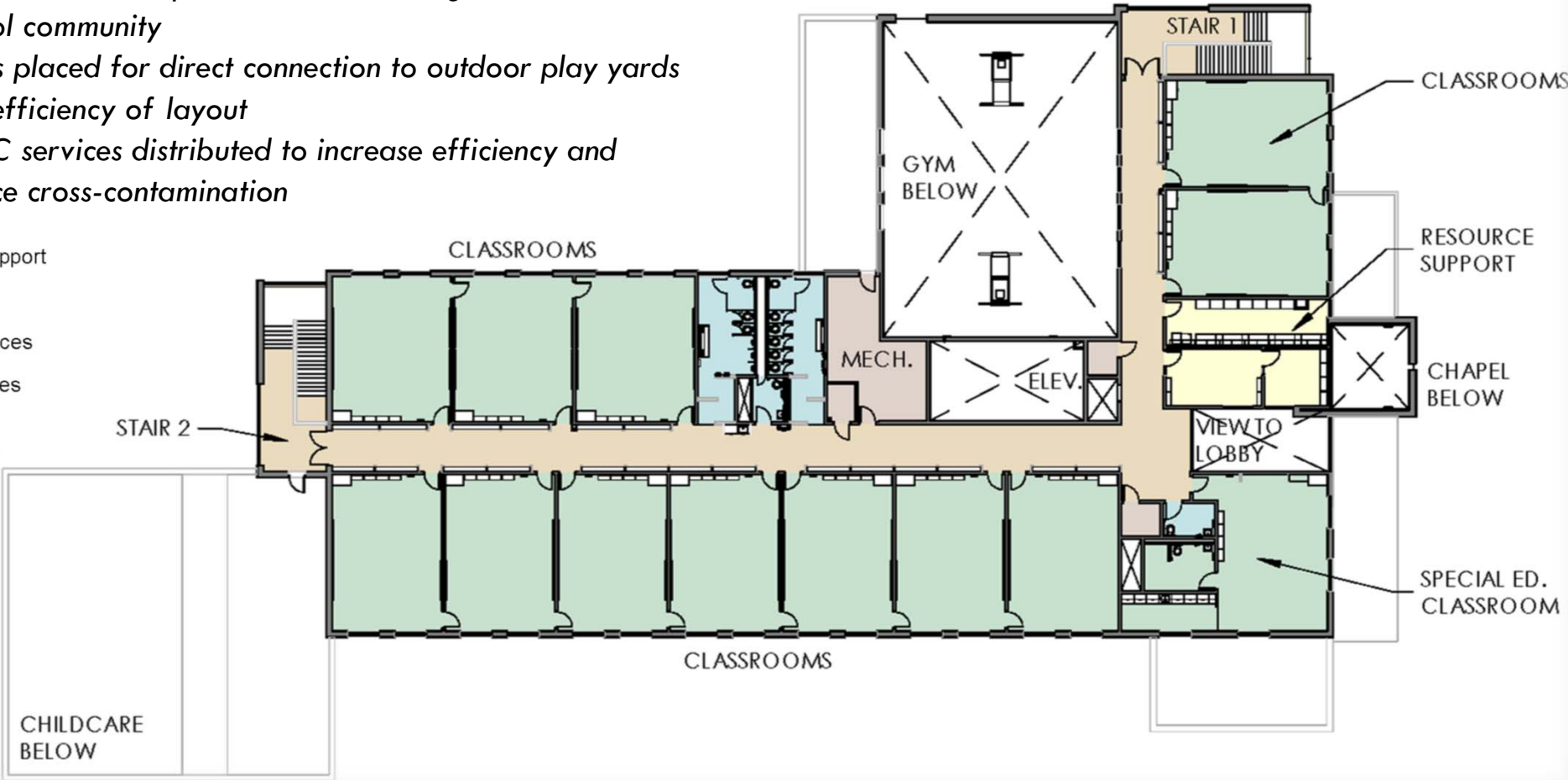


NEW INNISFIL CATHOLIC ELEMENTARY SCHOOL

Building Plan Organization

- Visual connection to main floor through Atrium Lobby
- Special Education placed to ensure integration with school community
- Stairs placed for direct connection to outdoor play yards and efficiency of layout
- HVAC services distributed to increase efficiency and reduce cross-contamination

- Academic Support
- Circulation
- Learning Spaces
- Service Spaces
- Washrooms



SECOND FLOOR PLAN

NEW INNISFIL CATHOLIC ELEMENTARY SCHOOL

Catholicity and Community

Chapel



- *Location – Prominently expressed on the Front elevation and directly adjacent to the Atrium Main Lobby of the school*
- *Lighting – A simple slot window, expressed in crucifix form, glows to the interior during the day and to the exterior in the evening*
- *Flexibility of Design – Chapel can be opened to the Library to support larger services and events*

NEW INNISFIL CATHOLIC ELEMENTARY SCHOOL

Catholicity and Community

Atrium Lobby

- *Role – Focus of School Activity and Centre of Community Engagement*
- *Design - Two Storey space and clear sightlines provide intuitive visual orientation for visitors and guests.*
- *Focus - Layout places Chapel as primary element within the space*
- *Engagement - Provides location to present student work, school initiatives and community events*
- *Connection - Direct adjacency to Administration Office for welcome and supervision*



NEW INNISFIL CATHOLIC ELEMENTARY SCHOOL

+VG ARCHITECTS
THE VENTIN GROUP LTD

McMaster Avenue, Innisfil

Accessibility

- *Building designed for accessibility Ontario Building Code and Accessibility for Ontarians with Disabilities Act (OBC & AODA)*
- *Vertical Actuators for easier barrier free door operation*
- *Centrally-located elevator to both floors and stage level*
- *Door-free multi-user washroom access complete with barrier free stalls and urinals*
- *Wayfinding signage*
- *Universal washroom*
- *High-contrast stair finish*
- *Accessible administration service desk*
- *2 Van-Accessible parking spaces adjacent to sidewalk access*
- *Rolled curb at drop-off area*
- *One-way bus and drop-off loops*
- *Accent lighting at entrances and circulation nodes*



NEW INNISFIL CATHOLIC ELEMENTARY SCHOOL

Sustainable Design

- *Values Based Decision Making*
- *Automated systems with energy recovery*
- *Maximize Daylighting Opportunities*
- *Low consumption LED lights throughout*
- *Minimize Environmental Footprint*
- *Efficient space planning*

Durable Materials

- *Proven Durable Products*
- *Simple Materials Palette*
- *Locally Available Materials*
- *Life Cycle Considerations*
- *Board Maintenance Standards*



New Innisfil Catholic Elementary School

Simcoe Muskoka Catholic District School Board





ARCHITECTS
THE VENTIN GROUP LTD